

# Monthly Operations Report



January 2021

A nighttime photograph of a city skyline, likely San Francisco, with various skyscrapers illuminated. The sky is dark, and there are fireworks exploding in the upper right portion of the image, with streaks of light and bursts of color. The overall scene is festive and celebratory.

**Jia**

# 63,425

## Total pounds of garbage removed

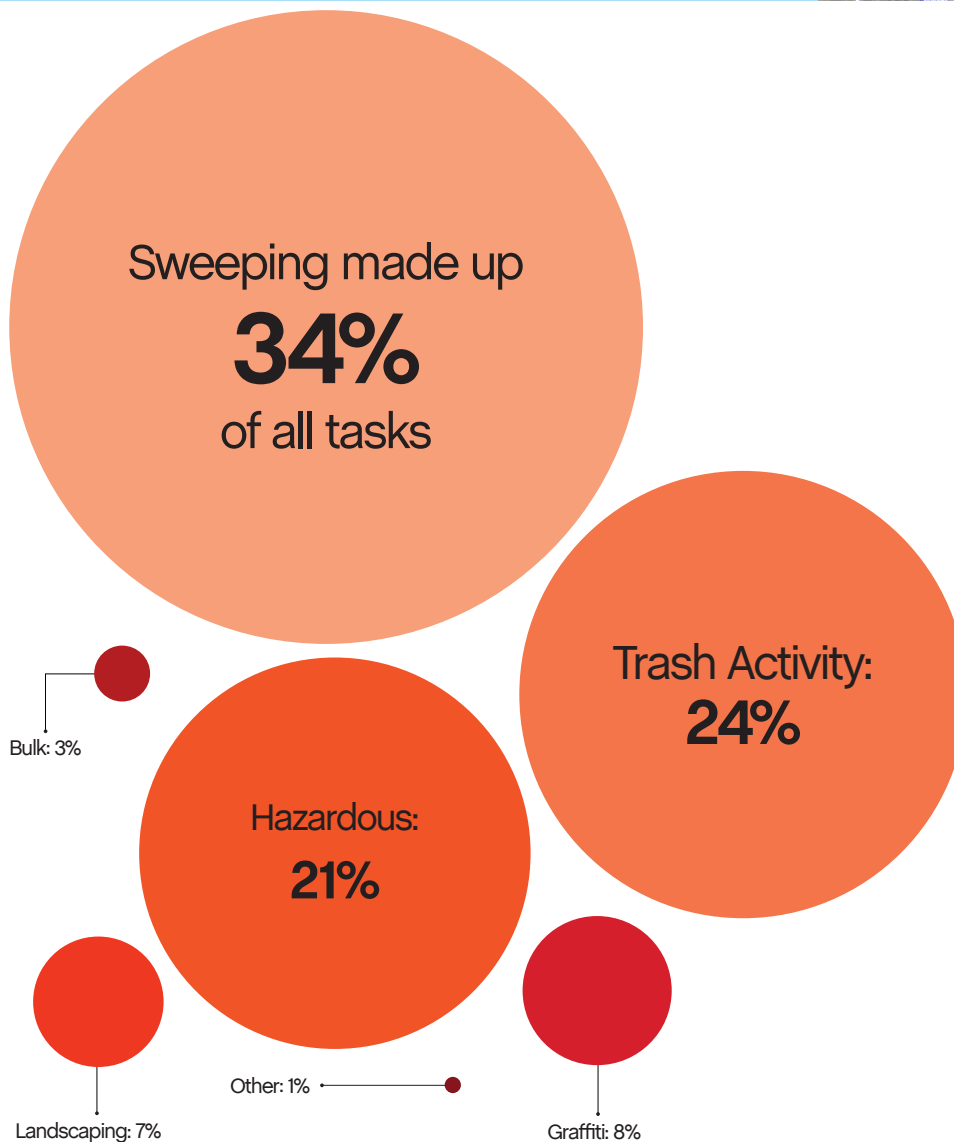
January's trash haul represents  
a **+17%** increase from December.



# 20,769

## Total cleaning tasks completed

7,138 Sweeping Tasks	34%
5,079 Trash Bag & Pickup Tasks	24%
4,404 Hazardous Tasks 4,098 Code Brown 293 Needle pickups 13 Vomit	21%
1,649 Graffiti Tasks	8%
1,507 Landscaping Tasks 1,106 Tree Wells 390 Weeding 11 Tree Trimmings	7%
692 Bulk Removal Tasks	3%
300 Other 202 SF311 Outbound 95 Dog Stations 2 Non-Emergency 1911 Outbound	1%

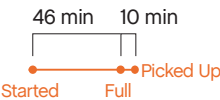




## Major Task Timelines

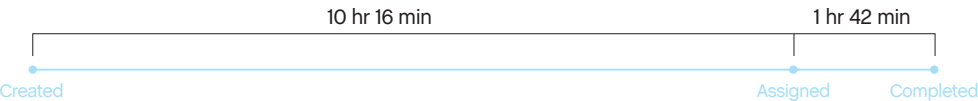
### Trash Bags

Trash bags filled up in 46 minutes, and were picked up in 10 minutes.



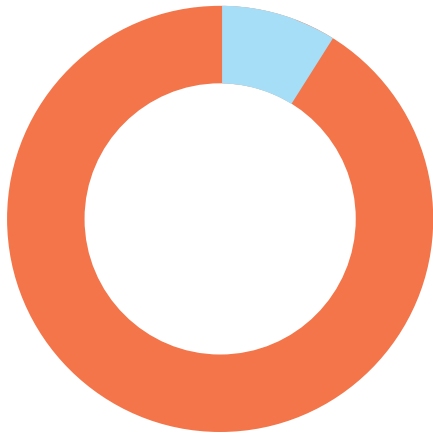
### Sweeping

Sweeping tasks were assigned in 10 hours (when inbound), and completed in about two hours.



Median values are used in timeline visualizations.

## Sources



**98%** of cleaning tasks were created by SOMA West.

**2%** of tasks were inbound from SF311.

Trash activity is excluded.

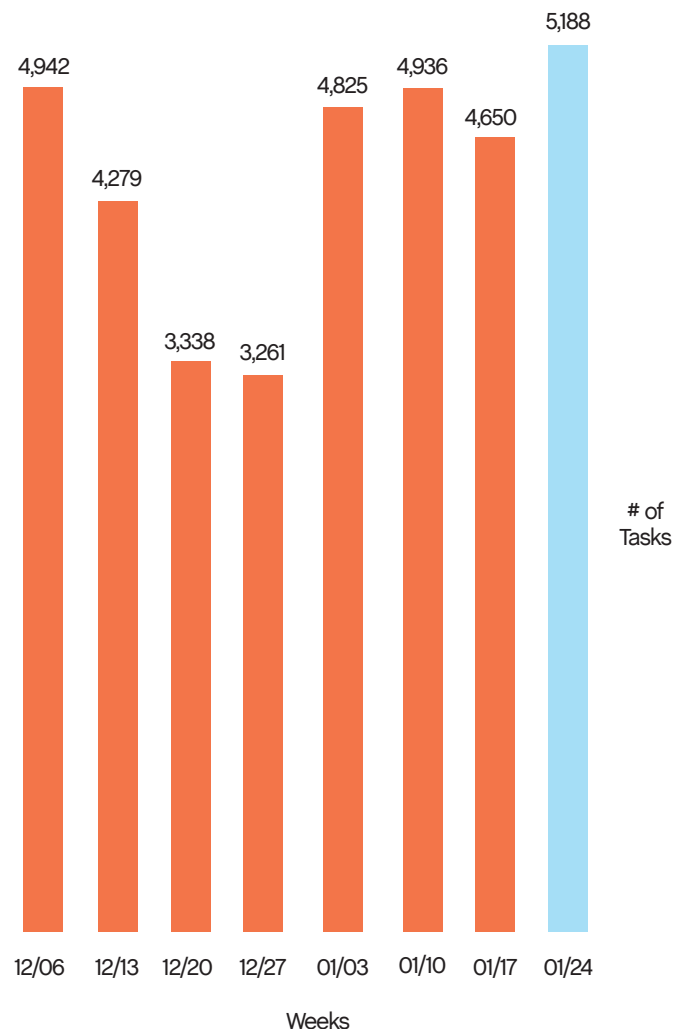
## Task Trends

Task activity

**increased 12%**  
month-over-month.

On average, task activity increased by

**481 tasks**  
week-over-week.



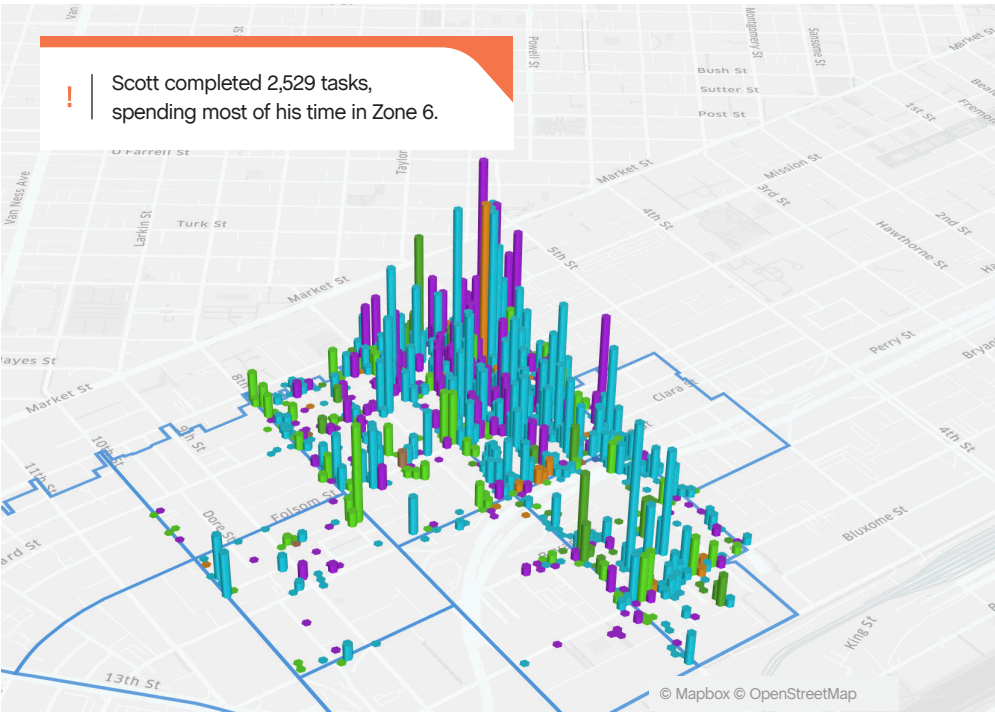
# Employee of the Month



Scott Soza



Scott S. has been with us since August and primarily works zones 6, 8, and 9. Since he's been with SOMA West CBD, he has been a leader in just about every statistical category. Scott has a background in construction but he really enjoys cleaning the streets of his hometown. A lively storyteller and workout enthusiast, Scott is also known around SOMA West for decorating his cart with stickers he removes from the public realm. We are lucky to have him on the team!



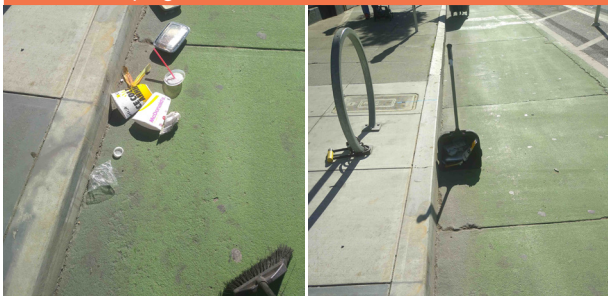
## Monthly Tasks Map

### Key

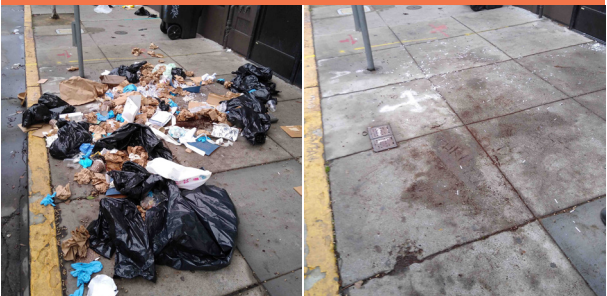
- Sweep
- Hazardous
- Graffiti
- Landscaping
- Bulk
- SF311 Outbound
- 911 Call
- Non-Emergency

Trash activity is excluded.

District Sweeping



Bulk Collection



District Sweeping



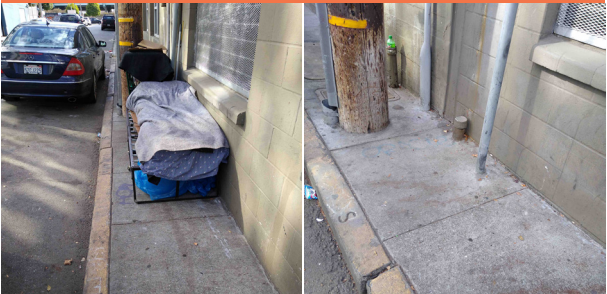
Bulk Collection



Graffiti



Bulk Collection



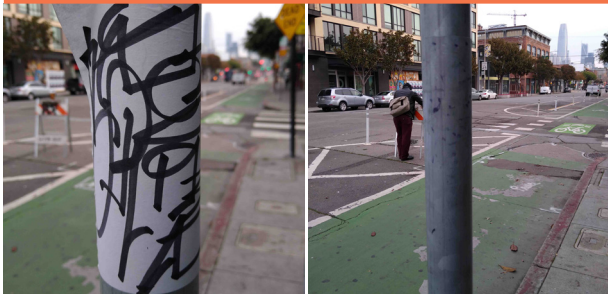
Graffiti



Landscaping

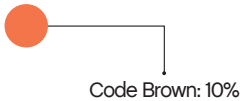
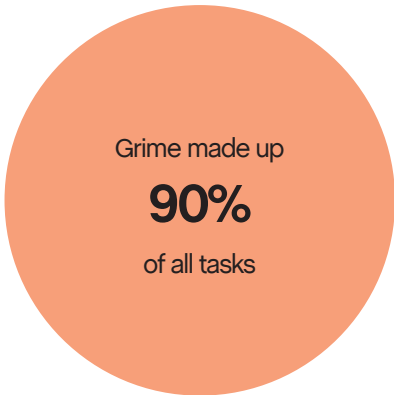


Graffiti



Hazardous Waste





# 21

Total Power Washing tasks completed

19 Grime Tasks	90%
2 Code Brown	10%

Monthly Tasks Map

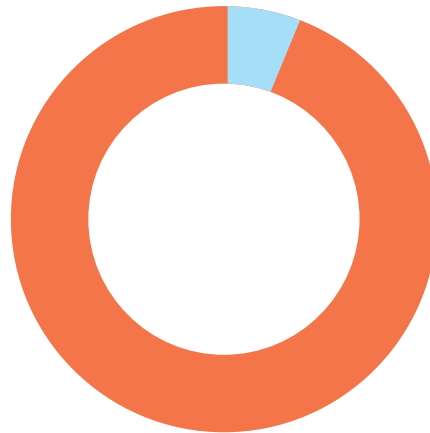
This heatmap shows Power Washing throughout the month.



# 118

## Total Outreach cases addressed

117 Encampment Cases	99%
1 Needles Pickups / Transfers	1%
0 Drugs Cases	0%
0 Mental Health Cases	0%



# 99%

of cases addressed were inbound from SF311.

1% of addressed cases were created by SOMA West.

In order to be considered addressed, a case must have been completed on Jia's platform.

### Monthly Encampment Map

Here, we're highlighting encampment counts & trends throughout the district.

This map shows 2,533 total tent counts, an average of 81 per day. A 37% increase from December's averages.



© Mapbox © OpenStreetMap



Powered by Jia