

Monthly Operations Report



December 2020

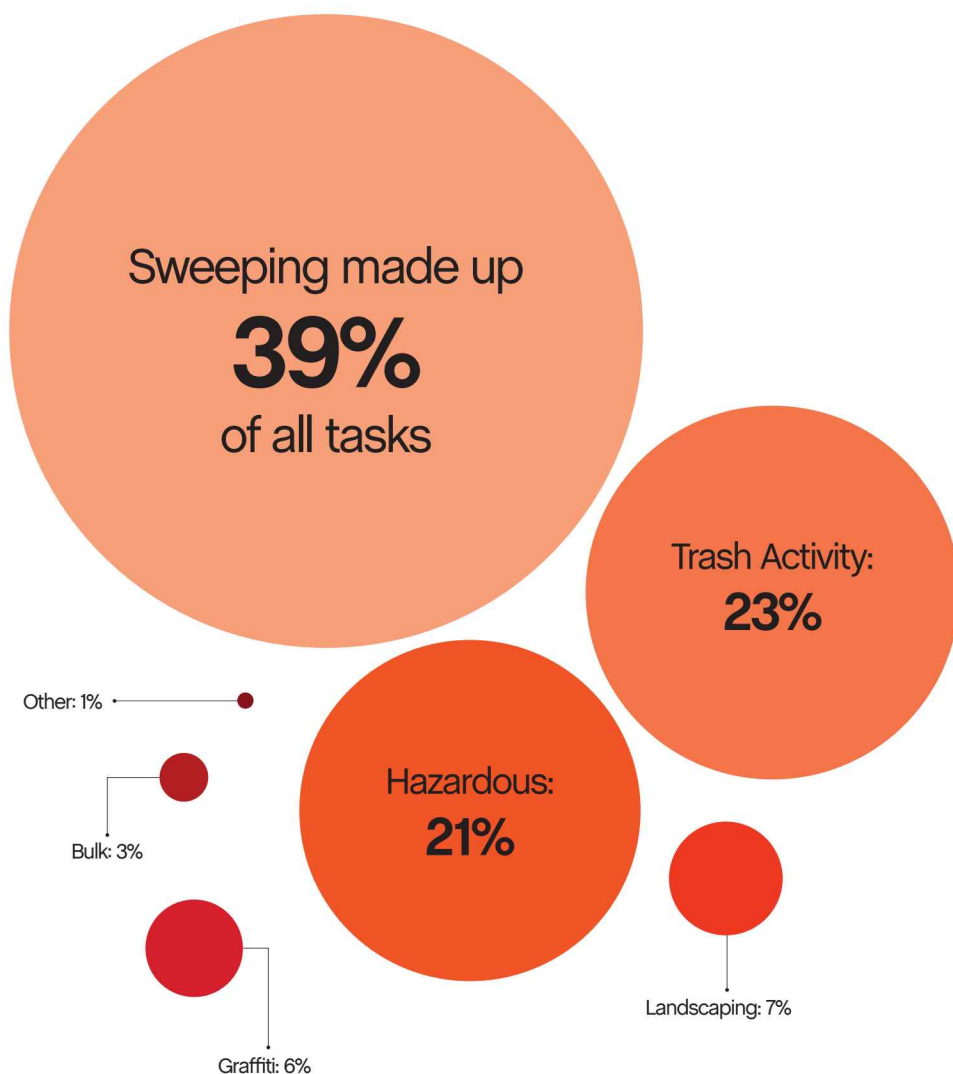
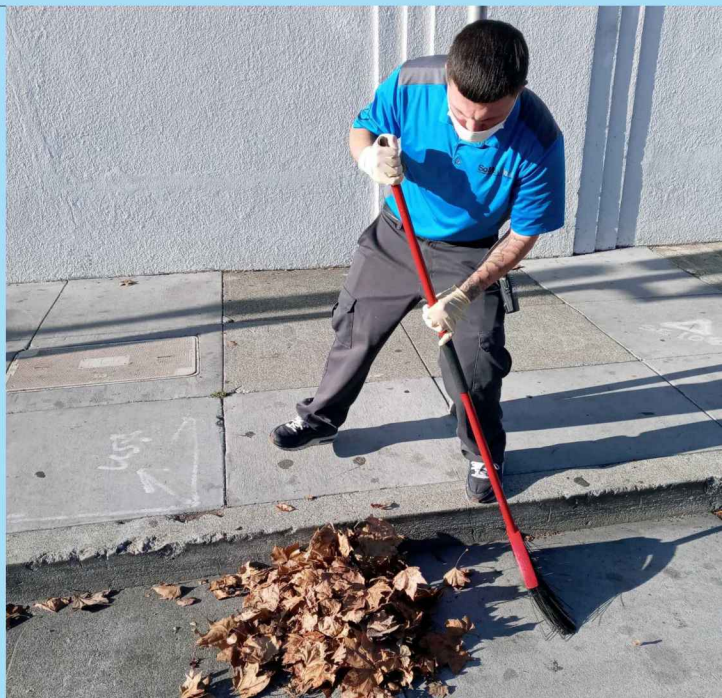
A photograph of several tall evergreen trees heavily covered in snow, set against a clear blue sky. The trees are the central focus of the image, with their branches and needles completely blanketed in white snow. The sky is a vibrant, clear blue, providing a sharp contrast to the white snow.

Jia

54,150

Total pounds of garbage removed

December's trash haul represents a **+19%** increase from November.



18,611

Total cleaning tasks completed

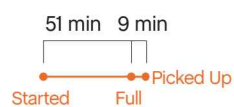
7,251 Sweeping Tasks	39%
4,340 Trash Bag & Pickup Tasks	23%
3,890 Hazardous Tasks 3,637 Code Brown 237 Needle pickups 16 Vomit	21%
1,245 Landscaping Tasks 1,082 Tree Wells 148 Weeding 15 Tree Trimmings	7%
1,045 Graffiti Tasks	6%
643 Bulk Removal Tasks	3%
197 Other 102 SF311 Outbound 88 Dog Stations 4 Non-Emergency 3 911 Outbound	1%



Major Task Timelines

Trash Bags

Trash bags filled up in about one hour, and were picked up in 9 minutes.



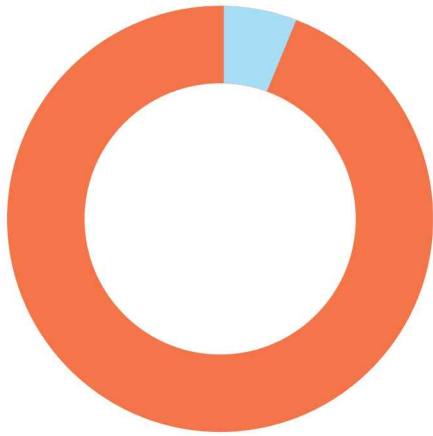
Sweeping

Sweeping tasks were assigned in 6 hours (when inbound), and completed in about one and a half hours.



Median values are used in timeline visualizations.

Sources



97% of cleaning tasks were created by SOMA West.
3% of tasks were inbound from SF311.

Trash activity is excluded.

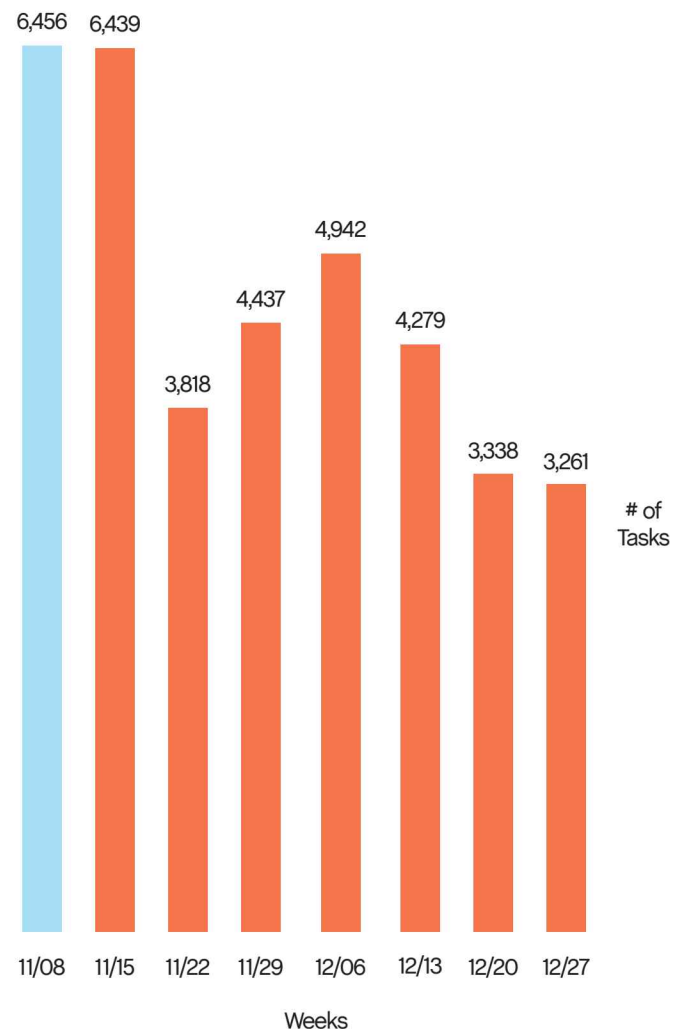
Task Trends

Task activity

decreased 23%
month-over-month.

On average, task activity decreased by

1,118 tasks
week-over-week.



Jason completed 1,340 tasks, spending most of his time in Zone 7.



Key

- Sweep
- Hazardous
- Graffiti
- Landscaping
- Bulk
- SF311 Outbound
- 911 Call
- Non-Emergency

Trash activity is excluded.

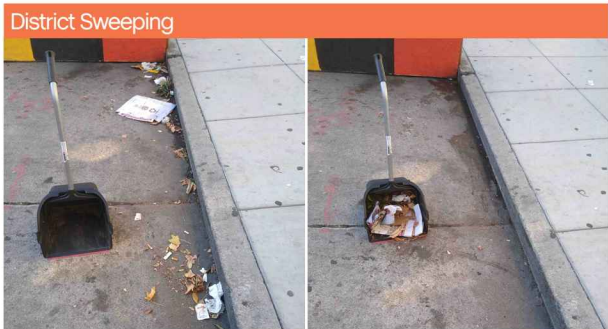
District Sweeping



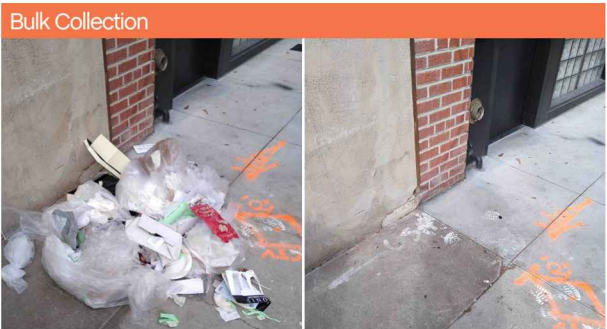
Bulk Collection



District Sweeping



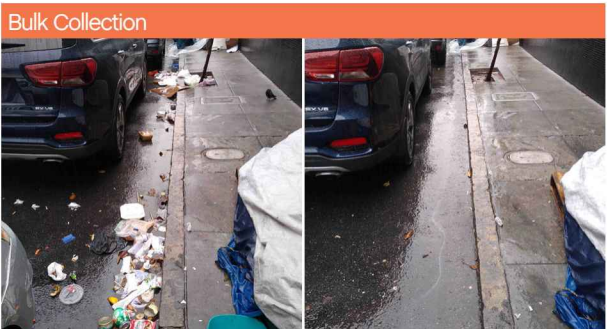
Bulk Collection



Graffiti



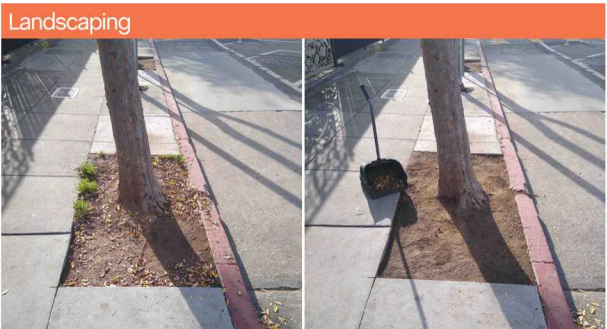
Bulk Collection



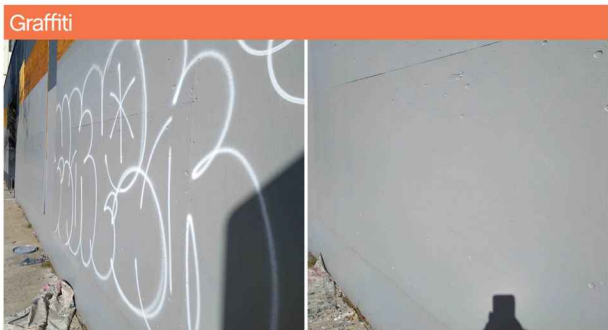
Graffiti



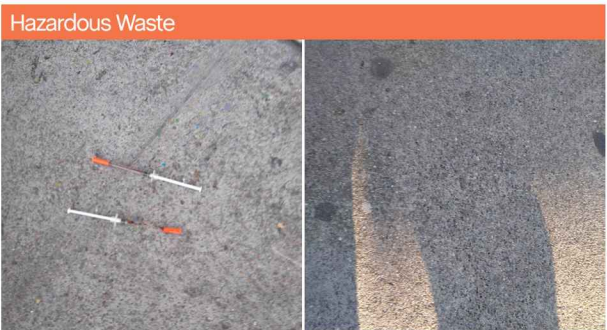
Landscaping



Graffiti



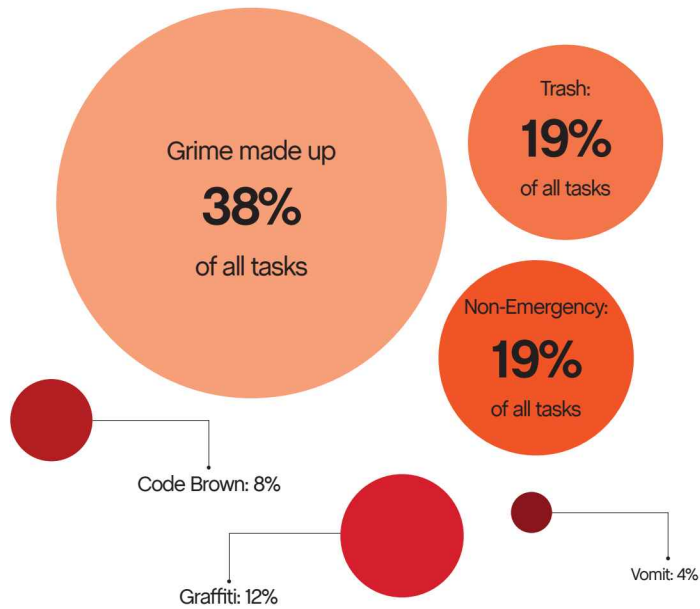
Hazardous Waste



26

Total Power Washing tasks completed

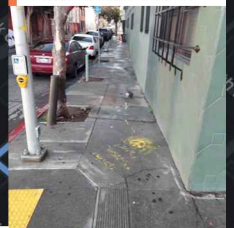
10 Grime Tasks	38%
5 Trash Tasks	19%
5 Non-Emergency	19%
3 Graffiti	12%
2 Code Brown Tasks	8%
1 Vomit Task	4%



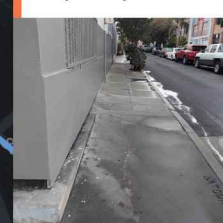
Monthly Tasks Map

This heatmap shows Power Washing throughout the month.

Dec 07, 07:35 AM PDT
Completed by: Curtis N.



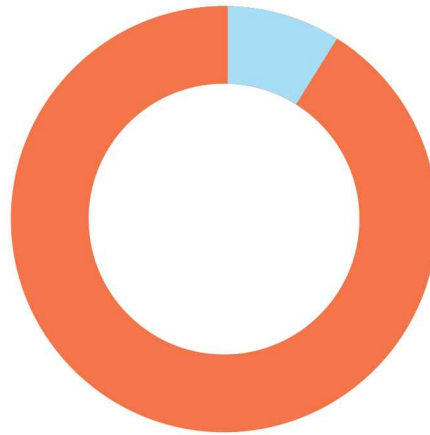
Dec 15, 07:28 AM PDT
Completed by: Curtis N.



119

Total Outreach cases addressed

118 Encampment Cases	99%
1 Needles Pickups / Transfers	1%
0 Drugs Cases	0%
0 Mental Health Cases	0%



97%

of cases addressed were inbound from SF311.

3% of addressed cases were created by SOMA West.

In order to be considered addressed, a case must have been completed on Jia's platform.

Monthly Encampment Map

Here, we're highlighting encampment counts & trends throughout the district.

This map shows 1839 total tent counts, an average of 59 per day.



© Mapbox © OpenStreetMap



Powered by Jia