

Monthly Operations Report



August 2020

An aerial photograph of a city skyline at sunset. The sun is a bright, glowing orb in the center of the frame, casting a warm, golden light over the city. The sky is filled with soft, wispy clouds. The city below is a dense collection of buildings, with some taller structures standing out against the horizon. The overall mood is peaceful and serene.

Jia

48,600

Total pounds of garbage removed

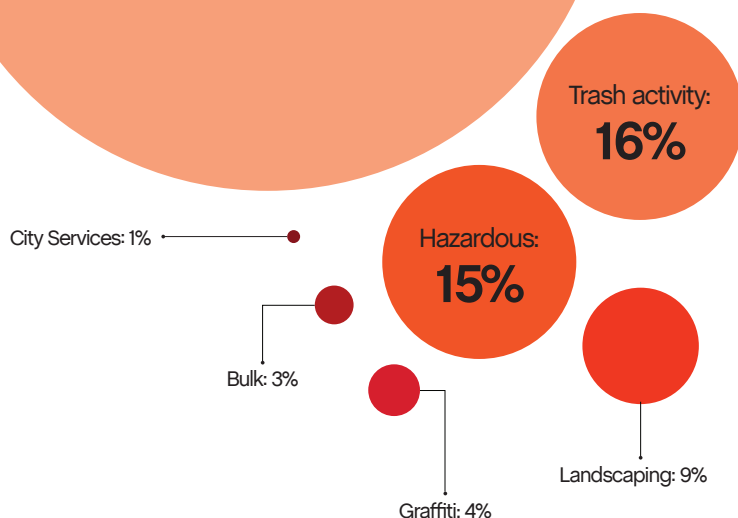
August's trash haul represents a **+21%** change from July.



Sweeping made up

53%

of all tasks



24,895

Total cleaning tasks completed

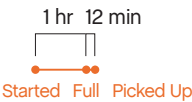
13,123 Sweeping Tasks	53%
3,868 Trash Bag & Pickup	16%
3,677 Hazardous Tasks 3,255 Code Brown 409 Needle pickups, 1,026 Needles 13 Vomit	15%
2,195 Landscaping Tasks 1,701 Tree Wells 381 Weeding 113 Tree Trimmings	9%
1,065 Graffiti Tasks	4%
791 Bulk Removal Tasks	3%
176 City Services 153 SF311 Outbound 17 Non-Emergency 6 911 Outbound	1%



Major Task Timelines

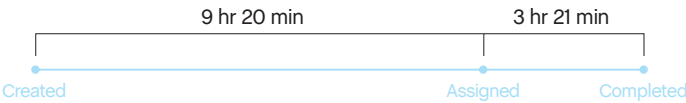
Trash Bags

Trash bags filled up in about one hour, and were picked up in 12 minutes.



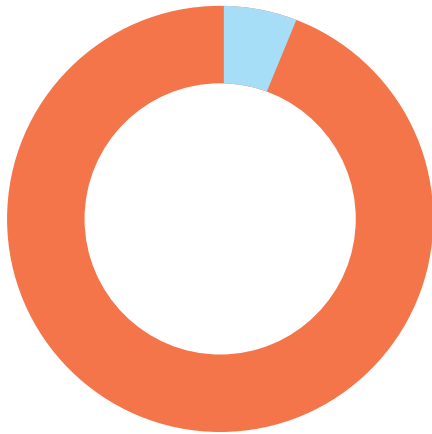
Sweeping

Sweeping tasks were assigned in nine hours (when inbound), and completed in about three and a half hours.



Median values are used in timeline visualizations.

Sources



97% of cleaning tasks were created by SOMA West.
3% of tasks were inbound from SF311.*

Trash activity is excluded.

*Just like last month.

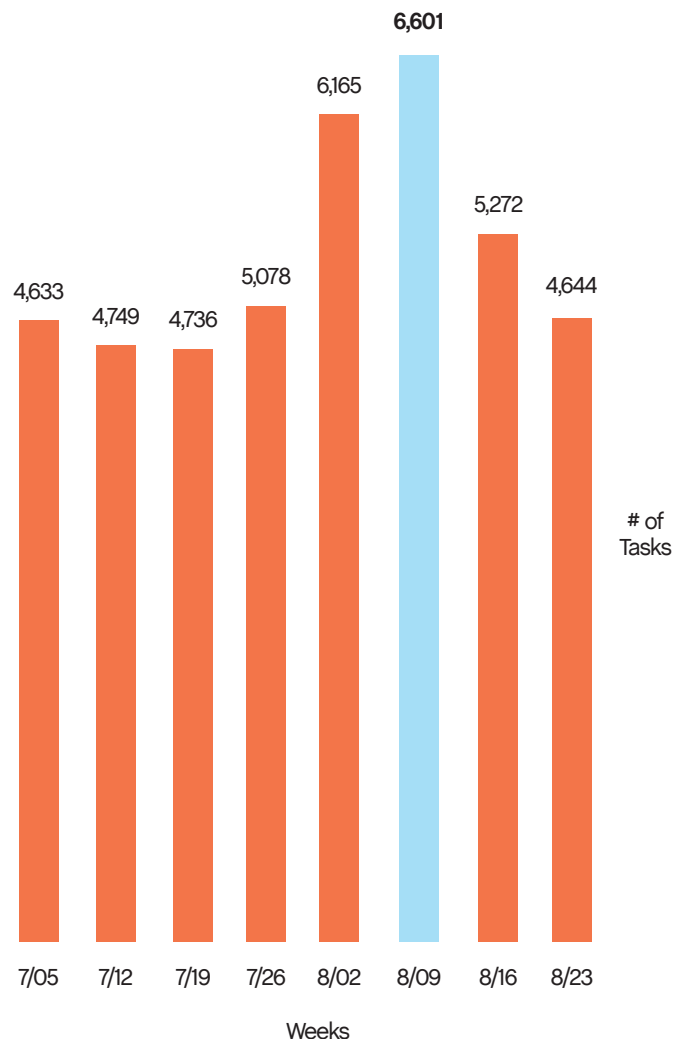
Task Trends

Task activity

increased 20%
month-over-month.

On average, task activity decreased by

109 tasks
week-over-week in August.

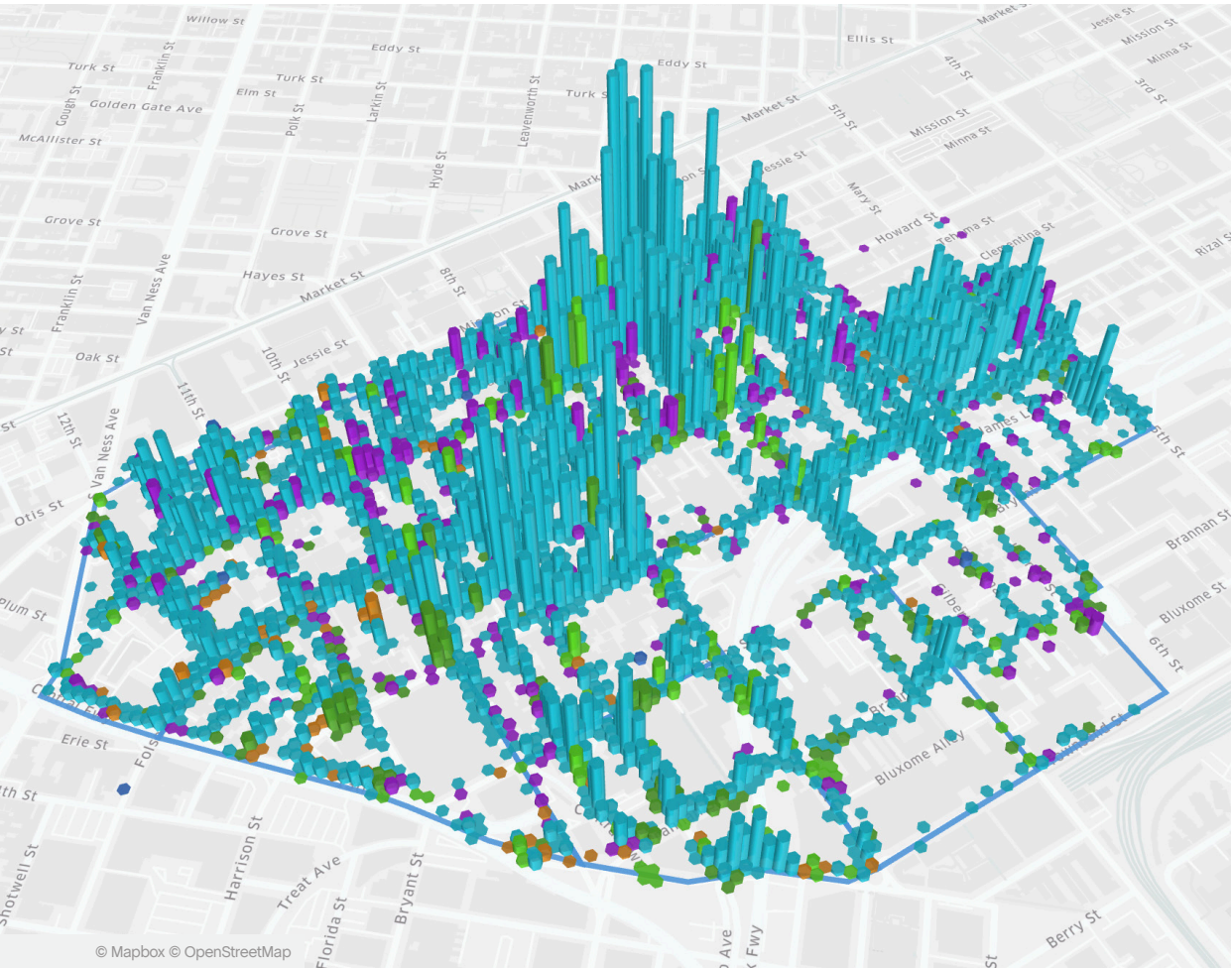
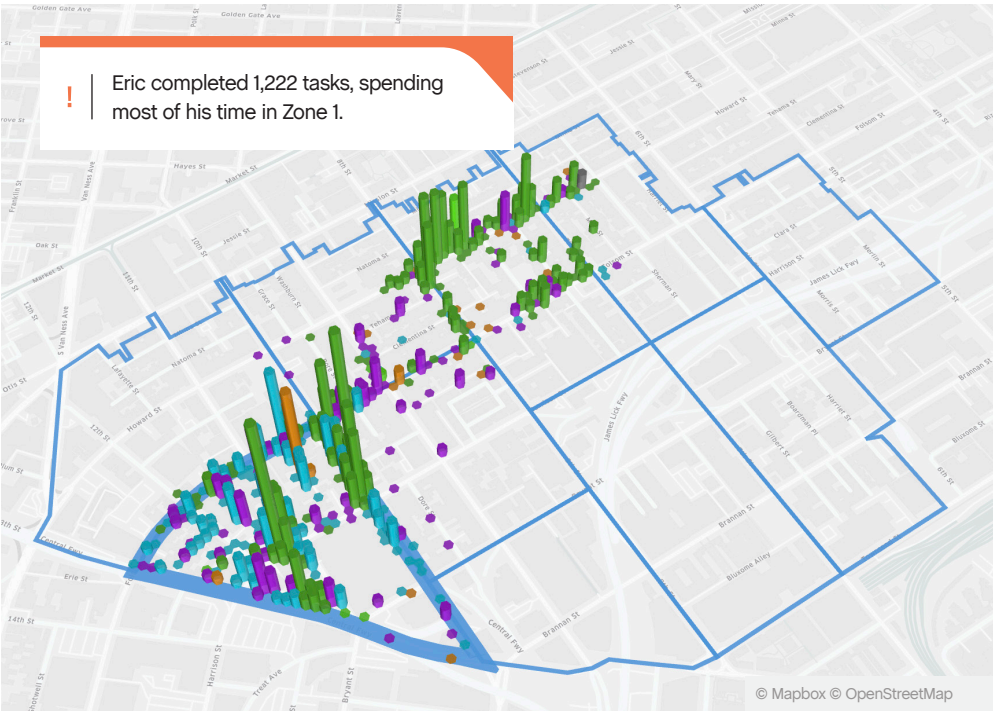


Employee of the Month



Eric L.

Eric L. is a San Francisco native who has been with us since we launched services in March. Eric is one of our most versatile team members, reliably completing any task assigned to him. He works primarily in the south-westernmost corner of the neighborhood, so he definitely gets his steps in! When asked what his favorite part of the job at SOMA West CBD is, he stated “helping the people, especially the homeless.”



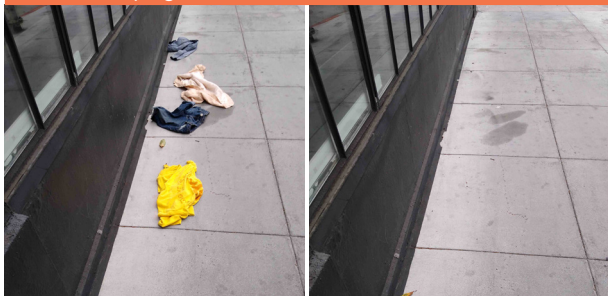
Monthly Tasks Map

Key

- Sweep
- Hazardous
- Graffiti
- Landscaping
- Bulk
- SF311 Outbound
- 911 Call
- Non-Emergency

Trash activity is excluded.

District Sweeping



Bulk Collection



District Sweeping



Bulk Collection



Graffiti



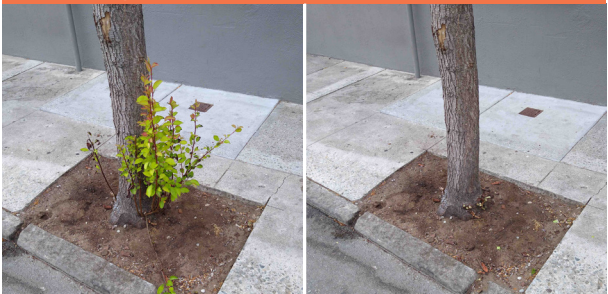
Bulk Collection



Graffiti



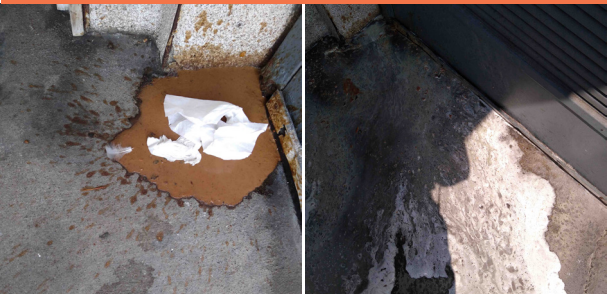
Landscaping

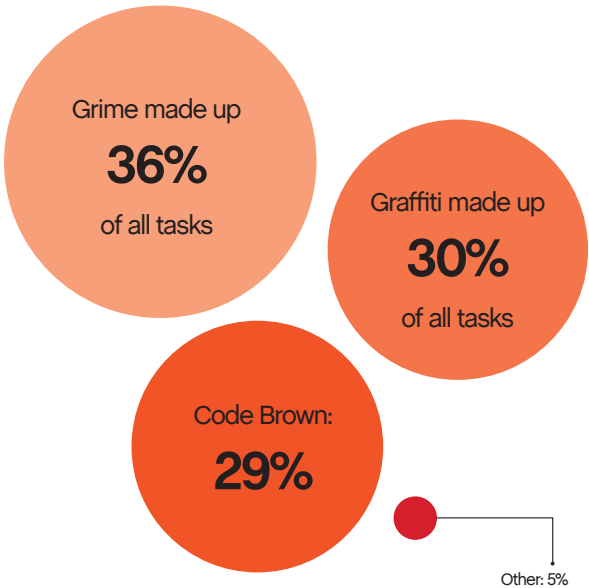


Graffiti



Hazardous Waste





170
Total Power Washing
tasks completed

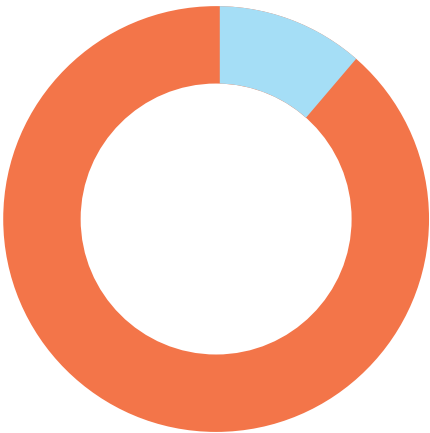
61 Grime Tasks	36%
51 Graffiti Tasks	30%
50 Code Brown Tasks	29%
8 Other	5%



159

Total Outreach cases addressed

153 Encampment Cases	96%
4 Needles Pickups / Transfers	3%
1 Mental Health Case	1%
1 Drugs Case	1%



89%

of cases addressed were inbound from SF311.

11% of addressed cases were created by SOMA West.

In order to be considered addressed, a case must have been completed on Jia's platform.



Monthly Encampment Map

This month, we're highlighting encampment counts & trends throughout the district.

This map shows 2,854 total tent counts, an average of 92 per day.

© Mapbox © OpenStreetMap



Powered by Jia